



DRAHTZUG STEIN

combicore

REM surface analysis to discover filling leftovers

Date: 17.08.2011

Application: Bar cooling systems for engine blocks
Tube casing: AlMn1
Inner- \varnothing : 4.0 mm
Flat area: 0.8 mm
Length: ca. 100.0 mm
Molding material: NaCl
Removal time: 18 s (without further optimization)
Medium: H₂O

Result: No NaCl leftovers detectable



Volksbank Kur- und Rheinpfalz eG
BLZ 547 900 00 Konto-Nr. 3891
IBAN DE91 5479 0000 0000 0038 91
SWIFT GENO DE 61 SPE

Kommanditgesellschaft, Sitz: Altleiningen
Reg. Ger. Ludwigshafen HRA 60490
KP: Drahtzug Stein combicore
Verwaltungs-GmbH, Sitz: Altleiningen
Reg. Ger. Ludwigshafen HRB 61142

Drahtzug Stein combicore
GmbH & Co. KG
D-67317 Altleiningen
Fon: +49 (0) 6356/966-0
Fax: +49 (0) 6356/966-118

Geschäftsführer:
Peter Staab

www.drahtzug.com
www.combicore.com



Magnification: 200 x
Voltage: 20 kV

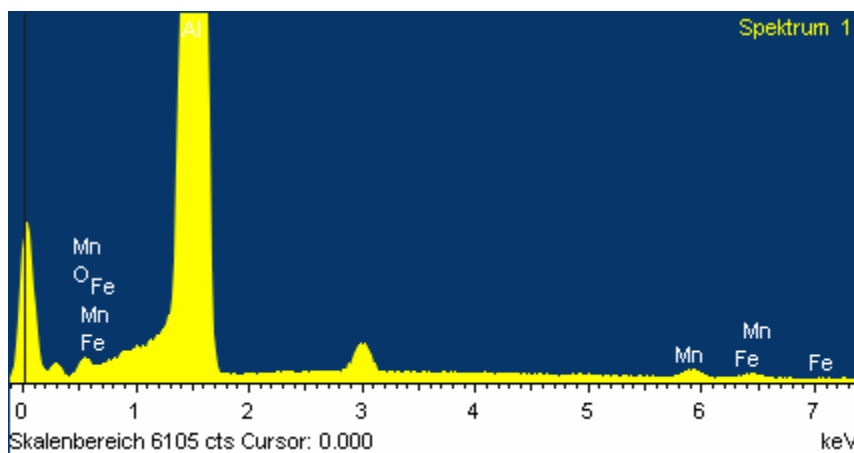
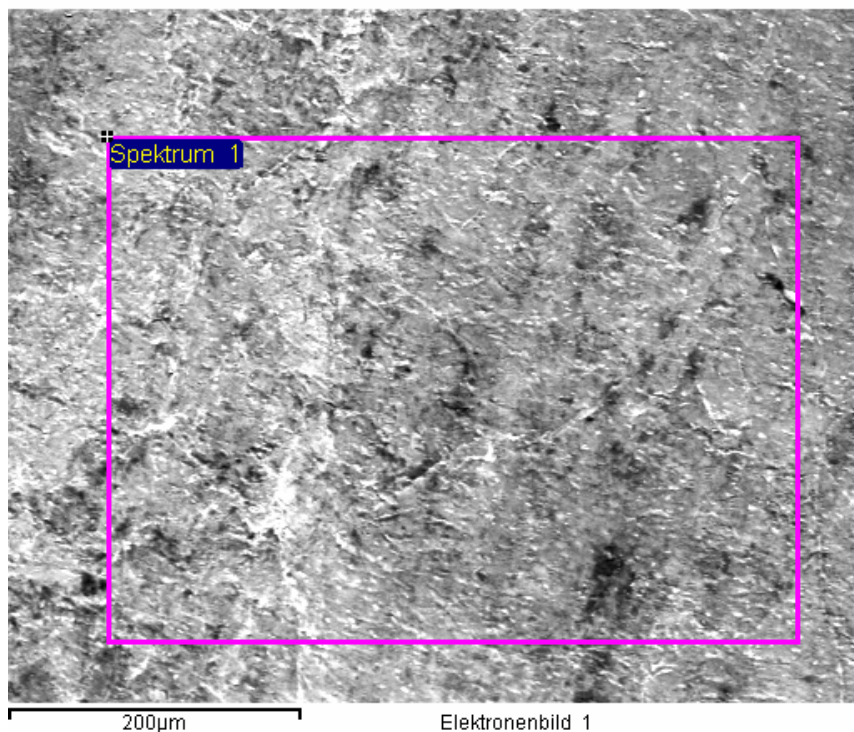
Converting option:
All elements are analysed (normalized)
Number of Iteration = 3

Standard (Calibration 01.06.1999):

Element	Conclusion to...
O	SiO ₂
Al	Al ₂ O ₃
Mn	Mn
Fe	Fe

Element	Mass-%	Atom-%
O	3,78	6,26
Al	94,78	93,05
Mn	0,94	0,45
Fe	0,50	0,24
Total	100,00	

Result: No NaCl leftovers detectable





Magnification: 200 x
Voltage: 20 kV

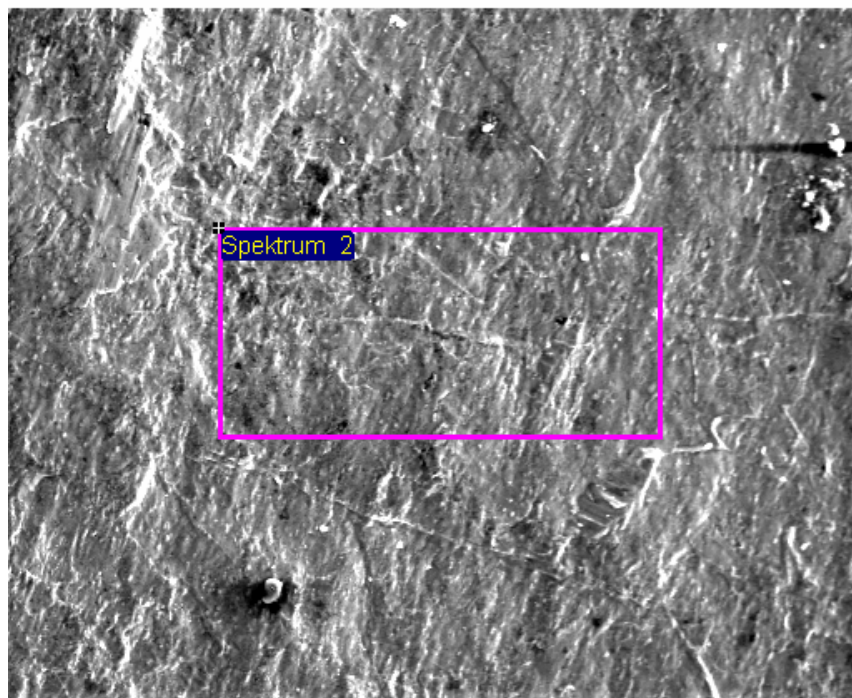
Converting option:
All elements are analysed (normalized)
Number of Iteration = 3

Standard (Calibration 01.06.1999):

Element	Conclusion to...
O	SiO ₂
Al	Al ₂ O ₃
Mn	Mn
Fe	Fe

Element	Mass-%	Atom-%
O	2,12	3,55
Al	96,55	95,81
Mn	0,90	0,44
Fe	0,44	0,21
Total	100,00	

Result: No NaCl leftovers detectable



Elektronenbild 1

